



# NEW SOUTH CREWS UTILIZE ACCESS EXPERTISE

## METRICS

✓ **CREW OF 10**  
field personnel

✓ **6 MONTH**  
project duration

## BACKGROUND

First Energy needed to perform a multi structure 138kv replacement and phase raising project so they called on NEW SOUTH (formerly KLEIN) to provide support.

Since the structure was close to a riverbed, our crews installed a tied together segmental retaining wall that utilized galvanized steel cages filled with rock to allow water to still flow near the base of structure at the river's edge to prevent erosion to the structure's base.



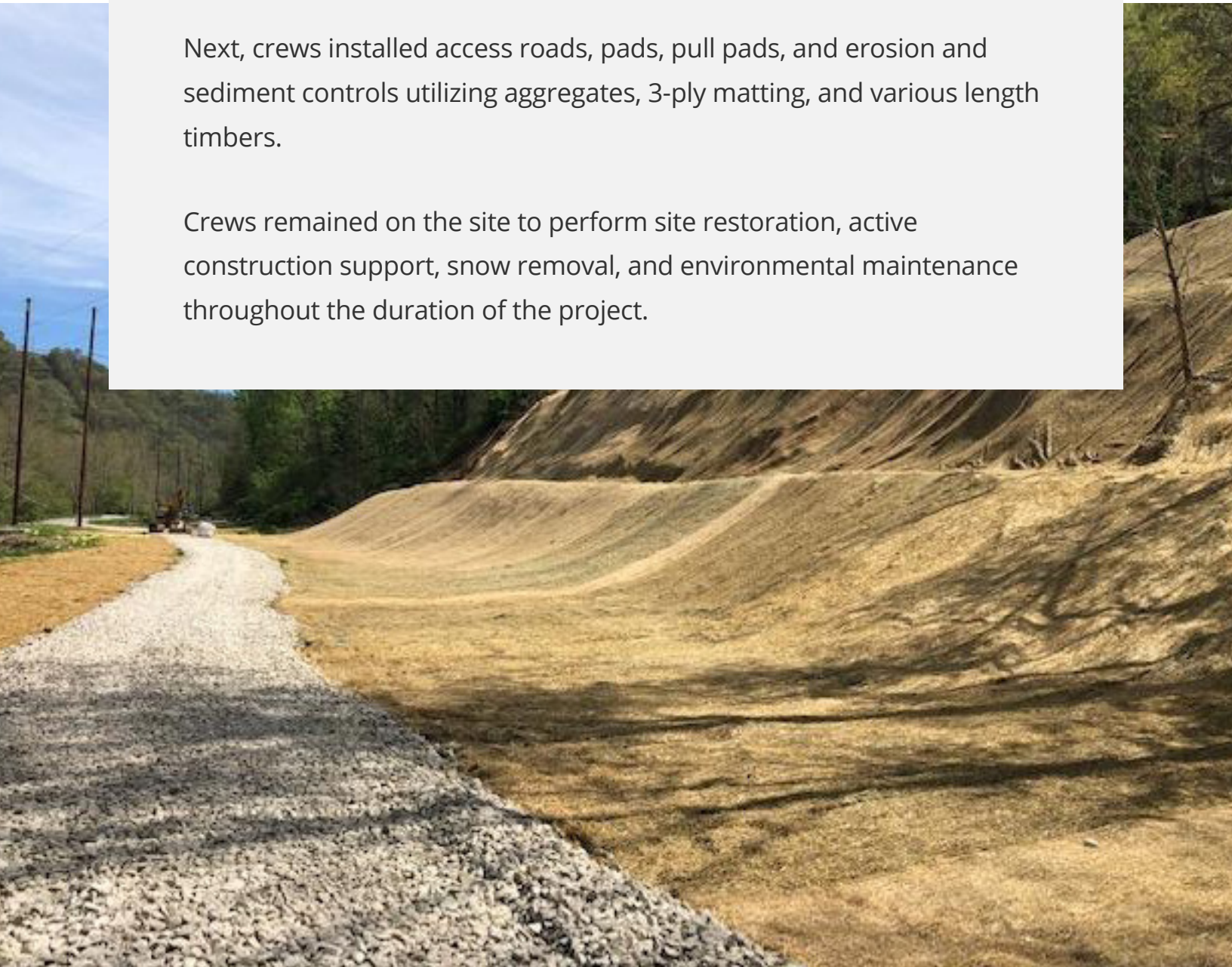
## PROJECT DETAILS

---

The project was on semi-mountainous and lowland terrain where a slip in the land had occurred so crews needed to repair the ground slip that affected the limit of disturbance. To do this they identified spring heads and intalled a drainage system, utilizing controlled discharge points. Then placed calciment, riprap channels, and uniaxial geogrid on the terrain.

Next, crews installed access roads, pads, pull pads, and erosion and sediment controls utilizing aggregates, 3-ply matting, and various length timbers.

Crews remained on the site to perform site restoration, active construction support, snow removal, and environmental maintenance throughout the duration of the project.



The right solution, in the right place, at the right time.



**NEW SOUTH**

A **YAK ACCESS** COMPANY

Discuss the details of your next site access project.

**CONTACT US**

